

THE SAPLING COMPANY



WHO WE ARE

The Sapling Company is a leader in engineering and designing advanced synchronized clock systems for a variety of industries and applications. We constantly push the boundaries of our technology and quality to offer the best systems possible. Built on a foundation of reliability, our products are engineered and manufactured in the United States at our headquarters in Pennsylvania.

As a global leader, Sapling demonstrates its commitment to innovation and productivity through its multiple patents and emphasis on research and development. Each system and product we offer is engineered and designed to meet strict international standards. This coincides with our mission to ensure that our high quality synchronized clock systems will operate safely, reliably, and efficiently for many years to come.

From New Zealand in the South to Alaska in the North, from Hong Kong in the Far East to Hawaii in the Far West, Sapling's Synchronized Clocks Systems can be found in many facilities all over the world. With more than two decades of experience and professionalism we proudly provide our systems to many satisfied customers worldwide. By choosing Sapling, you can count on our clocks to be on time, every time.

INDUSTRIES WE SERVE

Each of our clock systems has features that can benefit a wide range of industries. Here are just few of the facilities where our clocks can be found:



BUSINESS COMPLEXES

Business is conducted 24/7. Sapling recognizes this and now offers a customizable Zone Clock. The Zone Clock displays the time in different parts of the world so that companies working with overseas locations can know the time in other countries at a glance. The Sapling Zone Clock System is designed to automatically correct each individual clock for Daylight Saving Time according to its city designation.

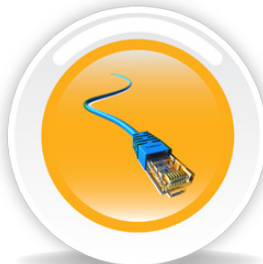


SYSTEMS WE OFFER

Sapling offers four different types of synchronized clock systems, each of which utilizes different features to accommodate all types of infrastructures. Each of our systems can be installed in an existing facility or a facility that is being built from the ground up. Sapling Clocks can provide extremely accurate and precise time in a multi-floor building or across a campus regardless of the size of your facility.



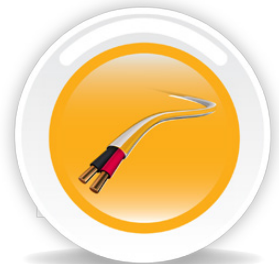
Wireless System



IP System



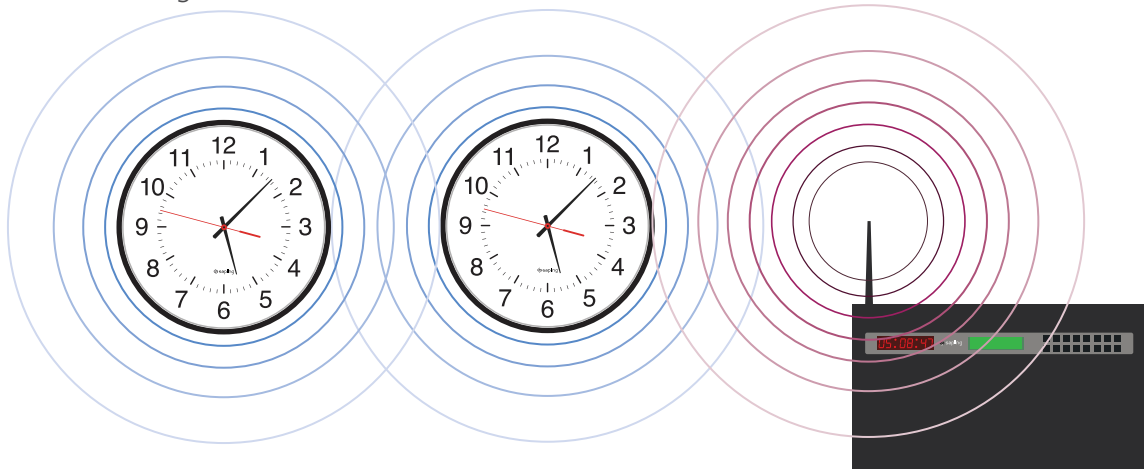
TalkBack System
Technology™



Wired System

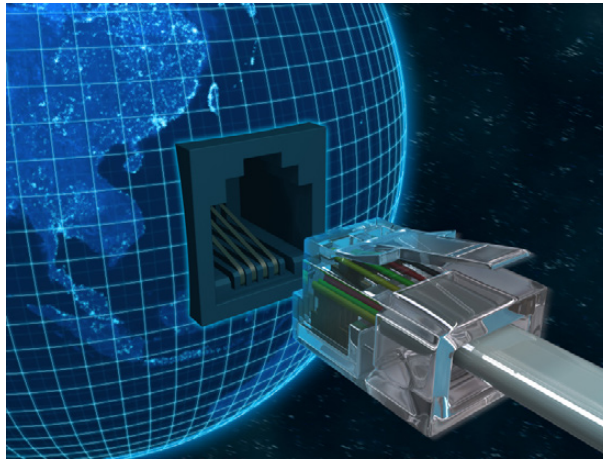
WIRELESS CLOCK SYSTEM

Sapling's Wireless Clock System begins with the master clock, which transmits the time to the clocks within its radius. Once those clocks receive and correct to the accurate time, the clocks have the ability to re-transmit the time signal to neighboring clocks. Sapling's Wireless Clock System is able to do this because each clock has a built-in repeater, ensuring each clock within the system receives, displays and re-transmits the correct time. This system is widely used in new and existing facilities due to the ease of installation.



IP CLOCK SYSTEM

Sapling's IP Clock System allows the end user total control over the entire system. Our IP Clocks are powered by PoE (Power over Ethernet) and each clock has a web interface that allows the user to adjust the various settings on the clock such as 12/24 hour mode, domestic and international Daylight Saving Time, and brightness level. Receiving the time from an NTP server or a master clock with a GPS Receiver ensures that each IP clock will display the most accurate time possible.



TALKBACK TECHNOLOGY™ WIRELESS CLOCK SYSTEM

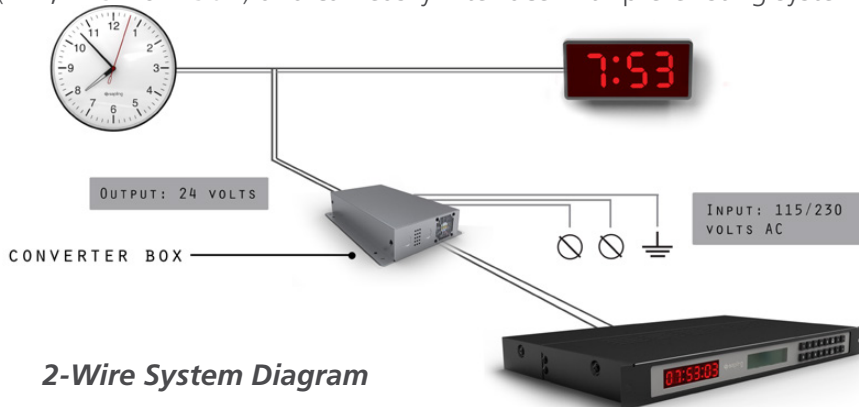
Operating in the same wireless manner as our Wireless Clock System, Sapling's TalkBack Technology™ Wireless Clock System includes our TalkBack Technology. This technology allows each clock to report its status back to the master clock. The report includes battery life, signal strength, mechanical and display alerts, and more. This system can also be set to send emails to the system administrator if any issues are reported by the clocks.



WIRED CLOCK SYSTEM

Whether installing in a new facility, or retrofitting an existing one, Sapling offers three types of Wired Systems:

- **2-Wire Digital Communication** - This system operates on only two wires and is one of the most advanced wired systems in the industry (diagram shown below).
- **RS485 Wired System** - Each clock runs off of local power and receives the time signal as often as once per second, making certain each clock has the correct time.
- **Sync-Wire** - Within this wired system, the clocks are capable of working on a variety of voltages (24V, 115V or 230V) and can easily interface with pre-existing systems.



2-Wire System Diagram

MASTER CLOCKS

Sapling offers various models of master clocks in order to provide solutions to a wide range of application needs. Depending on the model, the master clock may be capable of taking accurate time via a GPS Receiver, controlling other systems at predetermined times, sending a countdown command to digital clocks in the system, or upgrading to become an NTP Server and providing NTP time to other IP devices in the facility.

